



SPECTRA W9 1KVA / 1.5KVA / 2KVA / 3KVA



SPECTRA W9 6KVA / 8KVA / 10KVA



• True double-conversion online UPS

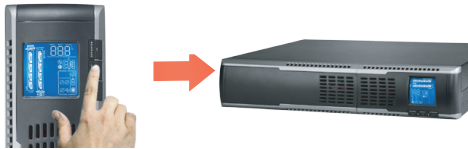
A true double conversion UPS will provide clean, high level quality power to fully protect mission-critical devices such as sensitive networks, small computer centers servers, telecom applications, as well as for industrial applications.

• Output power factor 0.9

SPECTRA W9 is a high-density UPS with output power factor 0.9 to provide higher performance and efficiency to critical applications.

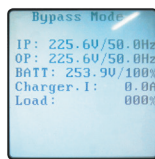
• User-friendly and easy-shift LCD display

The front panel digital display can be easily shifted through LCD setting to suit the installation format, vertically stand or flat wall mount.



SPECTRA W9 3KVA

SPECTRA W9 6, 8 & 10KVA



Rack display

Tower display

• Rack/Tower design

SPECTRA W9 series is designed in true universal-mount case. It can be easily installed as floor-standing tower or in 19-inch rack-mount bracket.



19" rack-mounting



Floor-standing Tower

• Programmable power management outlets

With programmable power management outlets, users can easily and independently control load segments. During power failure, this feature enables users to extend battery time to mission-critical devices by shutting down the non-critical devices.



Programmable Outlets (P1)- connect to non-critical devices

• 50/60 Hz frequency converter mode

Lock output frequency at 50Hz or 60Hz to suit power sensitive equipments.

• ECO and advanced ECO mode for energy saving

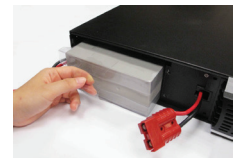
It allows UPS to operate in high efficiency up to 97% in energy-saving ECO mode. In this operation mode, load is supplied by the mains. In the event of a mains failure, the inverter takes over the load and provides supply continuity to the connected systems. SPECTRA W9 1-3KVA even offers advanced ECO mode to allow UPS to operate at higher efficiency up to 98%.

• Emergency Power Off Function (EPO)

This feature can secure the personnel and equipment in case of fires or other emergencies.

• Hot-swappable battery design for 1-3KVA models only

This design ensures clean and uninterruptible power to protected equipment during battery replacement.



• DSP technology applied for 6KVA and up models

A DSP controller provides an improved and cost-effective solution with high performance.

• Active input power factor correction 0.99 for 6KVA and up models

This feature will save more energy and its power factor performance is more stable to meet higher environment standards.

• N+X parallel redundancy available for 6K and up models

SPECTRA W9 (6KVA and up models) can be used in parallel operation with up to 3 units. It increases power capacity, safety and availability.

Spectra W9 1 - 3KVA Battery Pack

Capacity	1KVA	1.5 KVA	2 KVA	3 KVA
Battery Type	12 V / 9 Ah	12 V / 9 Ah	12 V / 9 Ah	12 V 9 Ah
Battery Number	4 pcs	6 pcs	8 pcs	12 pcs
Dimension (DxWxH)	380 x 438 x 88 [2U]		480 x 438 x 88 [2U]	600 x 438 x 88 [2U]
Net Weight (kgs)	17.1	21.5	29	41.2



Spectra W9 Rack /Tower Online UPS Selection Guide

MODEL	SPECTRA W9 1KVA	SPECTRA W9 1.5KVA	SPECTRA W9 2KVA	SPECTRA W9 2.5KVA	SPECTRA W9 3KVA	SPECTRA W9 3KVA	SPECTRA W9 3KVA
PHASE	Single phase with ground						
CAPACITY	VA	1000 VA	1500 VA	2000 VA	2500 VA	3000 VA	2500 VA
	W	900 W	1350 W	1800 W	2250 W	2700 W	2250 W
INPUT							
Nominal Voltage	200/208/220/230/240 VAC						
Rated Voltage Range	110-300 VAC						
Voltage Range	110-300 VAC ± 5% @ 50% load & 160-300 VAC ± 5% @ 100% load						
Frequency Range	40Hz/70 Hz						
Power Factor	≥ 0.99 @ Nominal Voltage (100% Load)						
OUTPUT							
Output Voltage	200/208/220/230/240 VAC						
AC Voltage Regulation (Batt. Mode)	± 1%						
Frequency Range (Synchronized Range)	47 ~ 53 Hz or 57 ~ 63 Hz						
Frequency Range (Batt. Mode)	50 Hz ± 0.1% or 60Hz ± 0.1%						
Current Crest Ratio	3:1 (max.)						
Harmonic Distortion	≤ 2 % THD (Linear Load); ≤ 4 % THD (Non-linear load)						
Transfer Time	Line mode to Battery mode	Zero					
	Inverter to Bypass	4 ms (Typical)					
Waveform (Batt. Mode)	Pure Sinewave						
EFFICIENCY							
AC Mode	90%			91%			
Battery Mode	88%			90%			
BATTERY							
Battery Type	12 V / 9 AH	Depending on the capacity of external batteries	12 V / 9 AH	Depending on the capacity of external batteries	12 V / 9 AH	Depending on the capacity of external batteries	12 V / 9 AH
Numbers	2		3		4		6
Typical Recharge Time	4 hours recover to 90% capacity		4 hours recover to 90% capacity		4 hours recover to 90% capacity		4 hours recover to 90% capacity
Charging Current (max.)	1.0 A	4A or 6A	1.0 A	4A or 6A	1.0 A	4A or 6A	1.0 A
Charging Voltage	27.4 VDC ± 1%		41.1 VDC ± 1%		54.7 VDC ± 1%		82.1 VDC ± 1%
INDICATORS							
LCD Display	UPS status, Load level, Battery level, AC mode, Battery mode, Bypass mode, and Fault indicator						
ALARM							
Battery Mode	Sounding every 5 seconds						
Low Battery	Sounding every 2 seconds						
Overload	Sounding every second						
Fault	Continuously sounding						
PHYSICAL							
Dimension, D x W x H (mm)	410 x 438 x 88 [2U]		410x 438 x 88 [2U]		630 x 438 x 88 [2U]		630 x 438 x 88 [2U]
Net Weight (kgs)	11.6	14.2	18.9	11.7	21.4	12.5	29.6
ENVIRONMENT							
Humidity	20-90 % RH @ 0- 40°C (Non-condensing)						
Noise Level	Less than 50dBA @ 1 Meter						
MANAGEMENT							
Smart RS-232 / USB	Supports Windows® 2000/2003/XP/Vista/2008, Windows® 7/8/10, Linux, Unix, and MAC						
Optional SNMP	Power management from SNMP manager and web browser						

* L means long-run model
Product specifications are subject to change without further notice.

Spectra W9 Battery Pack

Capacity	6K	10K
Battery Type	12/7Ah	12 V 9 Ah
Battery Number	20 pcs	20 pcs
Dimension (DxWxH)	580 x 438 x 133	580 x 438 x 133
Net Weight (kgs)	57	63



Spectra W9 Rack /Tower Online UPS Selection Guide

MODEL	SPECTRA W9 6K	SPECTRA W9 ISO 6K	SPECTRA W9 10K	SPECTRA W9 ISO 10K	
PHASE	Single phase with ground				
CAPACITY	6000 VA / 5400 W		10000 VA / 9000 W		
INPUT					
Nominal Voltage	200/208/220/230/240 VAC				
Voltage Range	176-300 VAC at 100% load ; 110-300 VAC at 50% load				
Frequency Range	46-54 Hz or 56-64 Hz				
Power Factor	≤ 0.99 @ 100% load				
OUTPUT					
Nominal Voltage	200/208/220/230/240 VAC	104 VAC x 2 / 208 VAC or 110 VAC x 2 / 220 VAC or 115 VAC x 2 / 230 VAC or 120 VAC x 2 / 240 VAC	200/208/220/230/240 VAC	104 VAC x 2 / 208 VAC or 110 VAC x 2 / 220 VAC or 115 VAC x 2 / 230 VAC or 120 VAC x 2 / 240 VAC	
AC Voltage Regulation	± 1%	± 3%	± 1%	± 3%	
Frequency Range(Synchronized Range)	46-54 Hz or 56-64 Hz				
Frequency Range(Batt. Mode)	50 Hz ± 0.1 Hz or 60 Hz ± 0.1 Hz				
Current Crest Ratio	3:1 (max.)				
Harmonic Distortion	≤ 2 % THD (Linear Load), ≤ 4 % THD (Non-linear Load)	≤ 3.5 % THD (Linear Load), ≤ 7 % THD (Non-linear Load)	≤ 2 % THD (Linear Load), ≤ 4 % THD (Non-linear Load)	≤ 3.5 % THD (Linear Load), ≤ 7 % THD (Non-linear Load)	
Transfer Time	Line mode to Battery mode	Zero			
	Battery mode to Line mode	Zero			
	Inverter to Bypass	Zero			
	Bypass to Inverter	Zero			
Waveform (Batt. Mode)	Pure Sinewave				
EFFICIENCY					
Line Mode	90%	84%	90%	84%	
Battery Mode	88%	82%	88%	82%	
ECO Mode	96%	87%	96%	87%	
BATTERY					
Standard Model	Nominal Voltage	240 VDC			
	Battery Type	12 V / 7 AH		12 V / 9 AH	
	Numbers	20 (18-20 pcs adjustable)*		20 (18-20 pcs adjustable)*	
	Typical Recharge Time	7 hours recover to 90% capacity		9 hours recover to 90% capacity	
	Charging Current (max.)	1.0 A		1.0 A	
	Floating Voltage	273 VDC (based on battery numbers at 20 pcs)			
Long Run Model	Battery Type and Numbers	Depending on applications			
	Charging Current (max.)	4.0 A		4.0 A	
	Floating Voltage	273 VDC (based on battery numbers at 20 pcs)			
INDICATORS					
LCD Display	UPS status, Load level, Battery level, Input/Output voltage, Discharge timer, and Fault conditions				
ALARM					
Battery Mode	Sounding every 4 seconds				
Low Battery	Sounding every second				
Overload	Sounding twice every second				
Fault	Continuously sounding				
PHYSICAL					
Standard Model	Dimension, D x W x H(mm)	UPS unit: 580 x 438 x 133 [3U] Battery pack: 580 x 438 x133 [3U]	UPS unit: 580 x 438 x 133 [3U] Battery pack: 580x438 x 133 [3U] ISO bank: 580 x 438 x 133 [3U]	UPS unit: 668 x 438 x 133 [3U] Battery pack: 580 x 438 x133 [3U]	UPS unit: 668 x 438 x 133 [3U] Battery pack: 580 x 438 x 133 [3U] ISO bank: 668 x 438 x 133 [3U]
	Net Weight (kgs)	UPS unit: 20 Battery pack: 57	UPS unit: 20 / Battery pack: 57 / ISO bank: 67	UPS unit: 23.5 Battery pack: 63	UPS unit: 23.5 / Battery pack: 63 / ISO bank: 90
long-run Model	Dimension, D x W x H(mm)	580 x 438 x 133	UPS unit: 580 x 438 x 133 ISO bank: 580 x 438 x 133	668 x 438 x 133	UPS unit: 668 x 438 x 133 ISO bank: 668 x 438 x 133
	Net Weight (kgs)	20	UPS unit: 20 ISO bank: 67	23.5	UPS unit: 23.5 ISO bank: 90
ENVIRONMENT					
Operation Humidity	0-95 % RH @ 0- 40°C (Non-condensing)				
Noise Level	Less than 58dBA @ 1 Meter		Less than 60dBA @ 1 Meter		
MANAGEMENT					
Smart RS-232 / USB	Supports Windows® 2000/2003/XP/Vista/2008, Windows® 7/8/10, Linux, Unix, and MAC				
Optional SNMP	Power management from SNMP manager and web browser				

* L means long-run model
Product specifications are subject to change without further notice